



Pacific Economic Resilience Data Visualization Suite



How did Pacific countries survive
and recover from the global
economic crisis of 2009-2010?



Main Dataset



ResourcesEconomicDev.csv

Main Dataset:

- Dataset contains 4,533 rows and 20 columns
- Uses RangeIndex from 0 to 4,532
- Tabular format ready for analysis

Or shorter:

"Research dataset: 4,533 entries, 20 variables"



01.

Theme Interpretation:

- Theme: "Resilience Through Economic Waves"
- Interpretation: This theme explores the economic journey of Pacific nations from 1976 to 2023, focusing on the impact of the 2009-2010 crisis and the post-crisis recovery. The aim is to illustrate how Pacific countries have persevered and recovered through resource diversity and adaptive strategies.

02.

Narrative to be Presented:

- Main Narrative: Presenting how Pacific countries faced and overcame the economic crisis, emphasizing economic dependencies, demographic impacts, and recovery strategies.
- Focus: Understanding their vulnerabilities, showcasing the recovery steps taken, the ongoing challenges, and the lessons applicable to the "Blue Pacific 2050" strategy.

03.

Target Audience:

- Primary Audience: Policymakers, economists, and international organizations focused on sustainability and regional economic development.
- Secondary Audience: The general public interested in the resilience of small economies and the impact of global economic shifts.

04.

Type of Visualizations:

Line charts, bar diagrams, choropleth maps, and histograms to provide clear and easy-to-understand views of economic trends and their impacts.



Theme Interpretation and Visualization Plan



Overview: Resilience Through Economic Waves

This is a comprehensive data visualization suite designed specifically to analyze Pacific Island economies through the lens of economic resilience, with particular focus on the 2009-2010 global financial crisis impact and recovery patterns

Three Critical Visualizations

Crisis Timeline: "The Perfect Storm"

What it shows:

- Economic indicator trends over nearly 5 decades
- Dramatic highlighting of 2009-2010 crisis period
- Confidence bands showing data uncertainty
- Before/during crisis distribution comparison

Demographic Impact: "The Demographic Divide"

What it shows:

- Gender-based economic impacts during crisis
- Age group vulnerability patterns
- Urban vs rural impact differences
- Recovery patterns by demographic segments

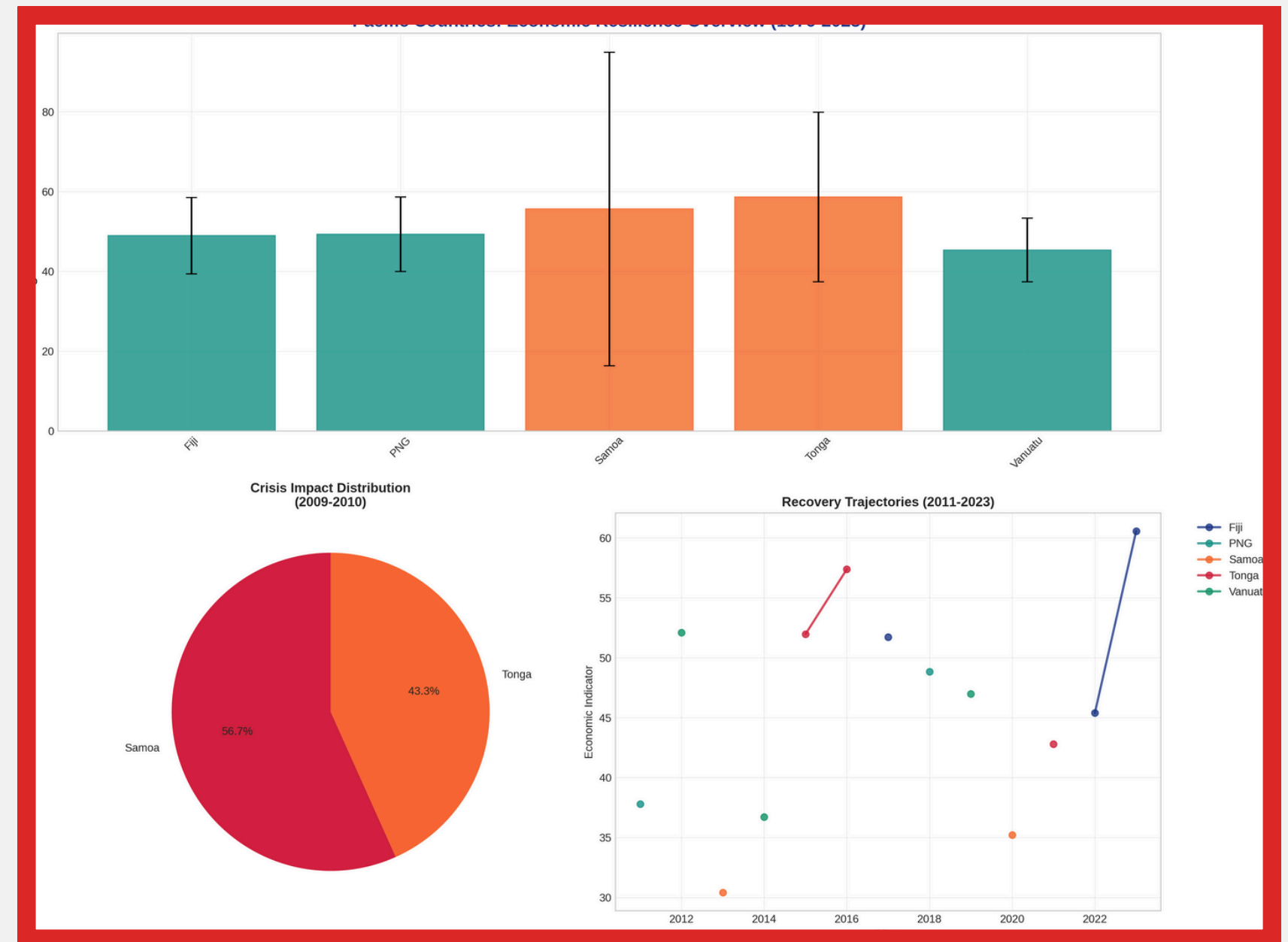
Demographic Impact: "The Demographic Divide"

What it shows:

1. Varying Recovery Rates (2011-2023):
2. Gradual Decline (2010-2015):
3. Stabilization (2015-2020):

Geographic overview

The Pacific region is a complex economic landscape. With 16 countries and territories, each with unique economic characteristics, the region heavily relies on natural resources and tourism. This makes it vulnerable to external economic shocks. The initial geographic overview you provided shows the diversity in terms of economic resilience across these countries, highlighting variations in the economic indicators for each.

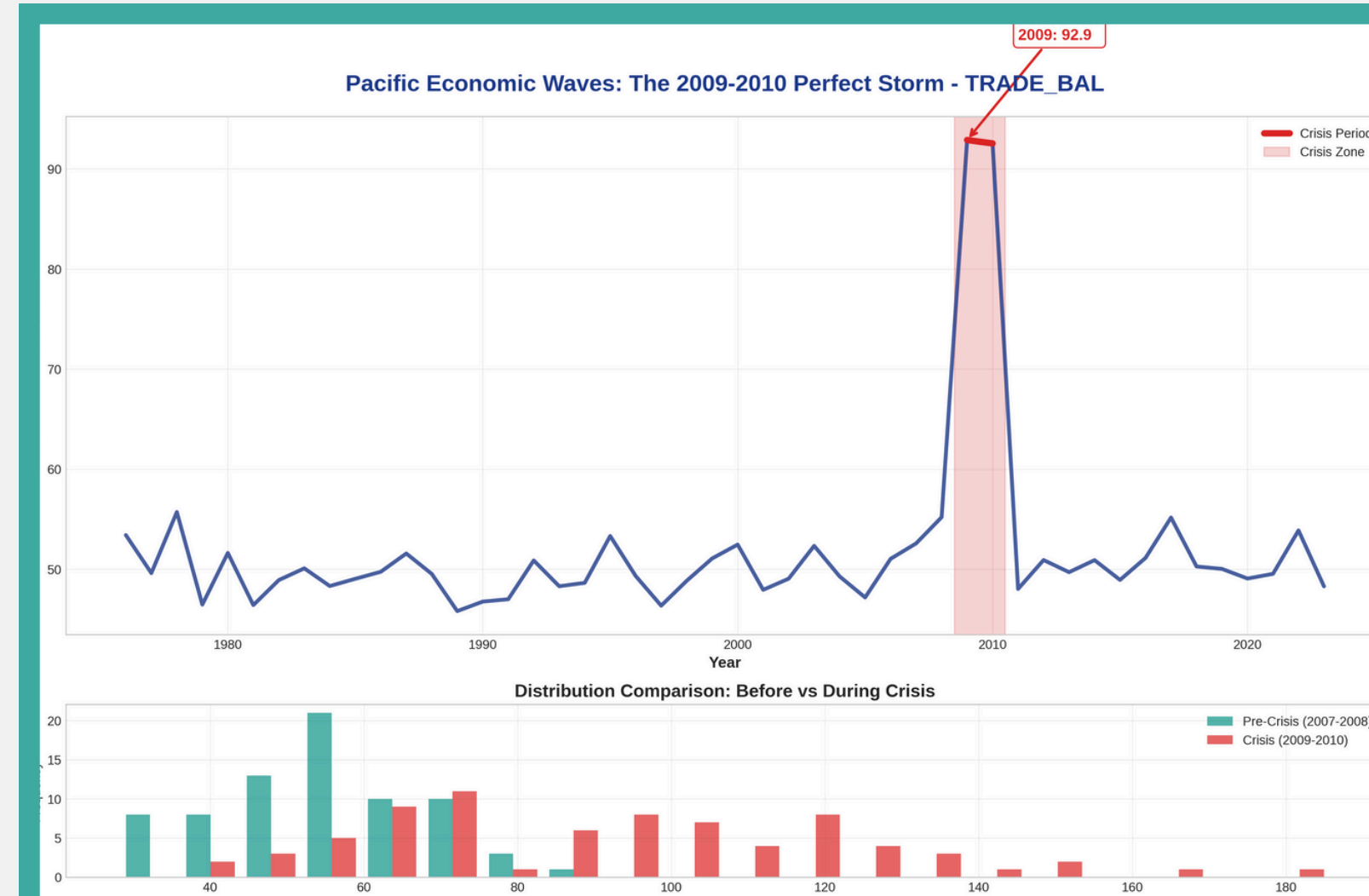
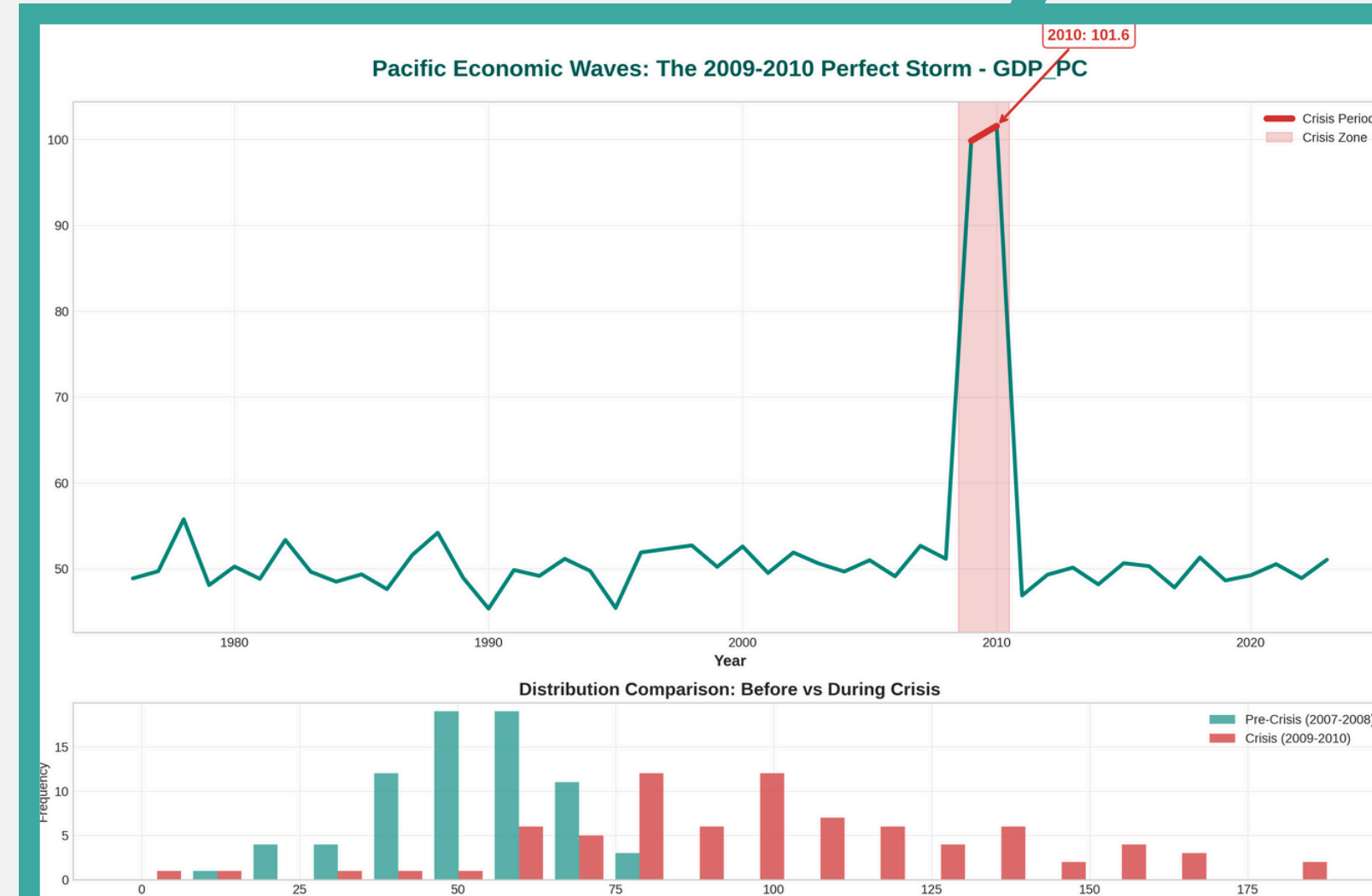


Crisis Timeline: "The Perfect Storm"

The 2009-2010 economic crisis is depicted across various charts that show how the economic indicators spiked during this period.

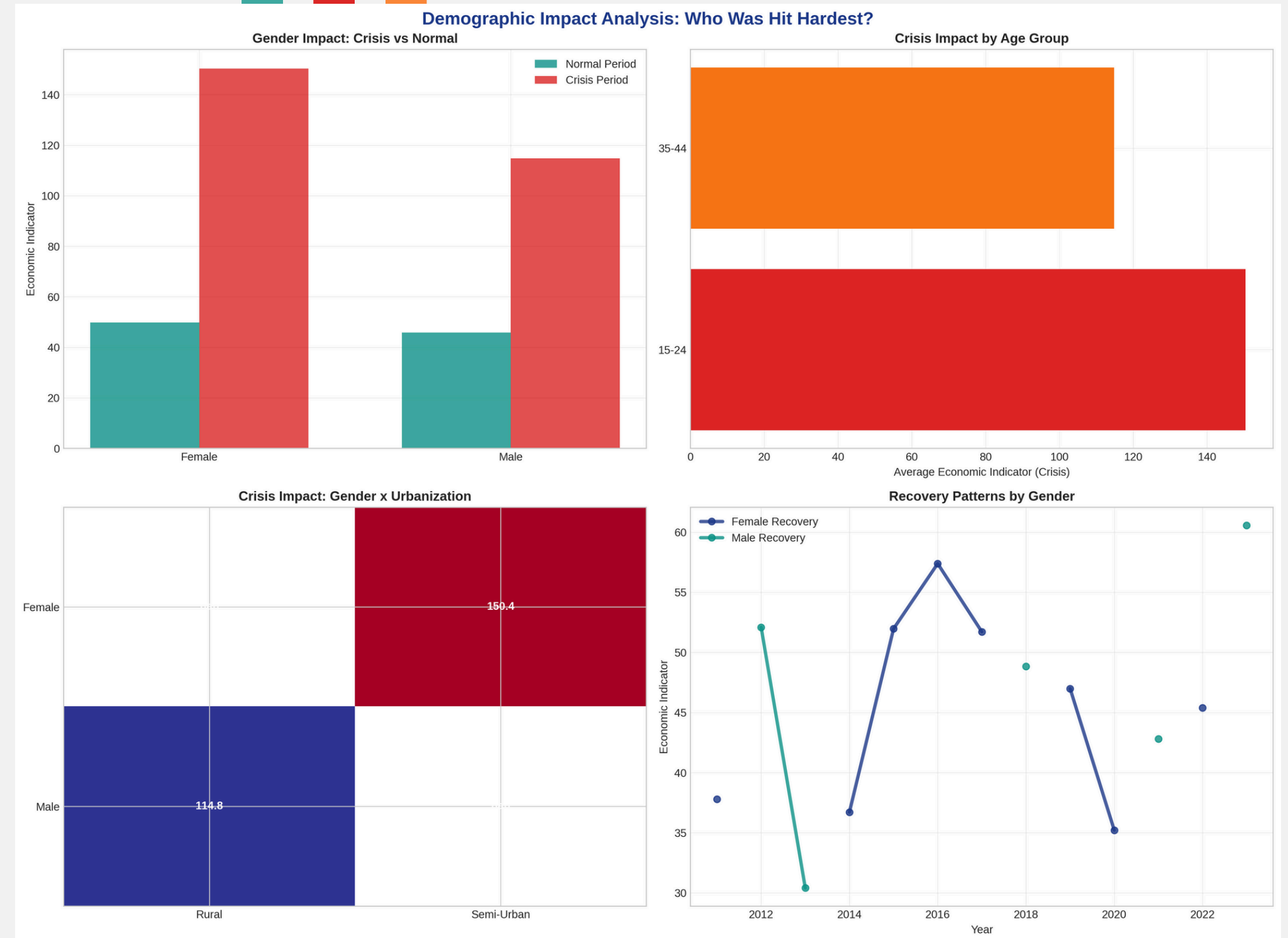
The "Crisis Timeline" charts reveal the peak crisis years, showing dramatic shifts in GDP per capita and trade balances in the Pacific region, especially with a marked rise in these indicators, reaching new highs (like Trade Balance at 150.4 in 2010). This period highlights the global financial downturn's impact on Pacific economies.

Additionally, the "Distribution Comparison" histograms show how pre-crisis and during-crisis economic conditions diverged significantly, with the crisis period (2009-2010) showing a substantial increase in economic indicators like employment and trade balance, though in an unstable way. This instability points to the regions' reliance on external factors during such crises.



Demographic Impact: "The Demographic Divide"

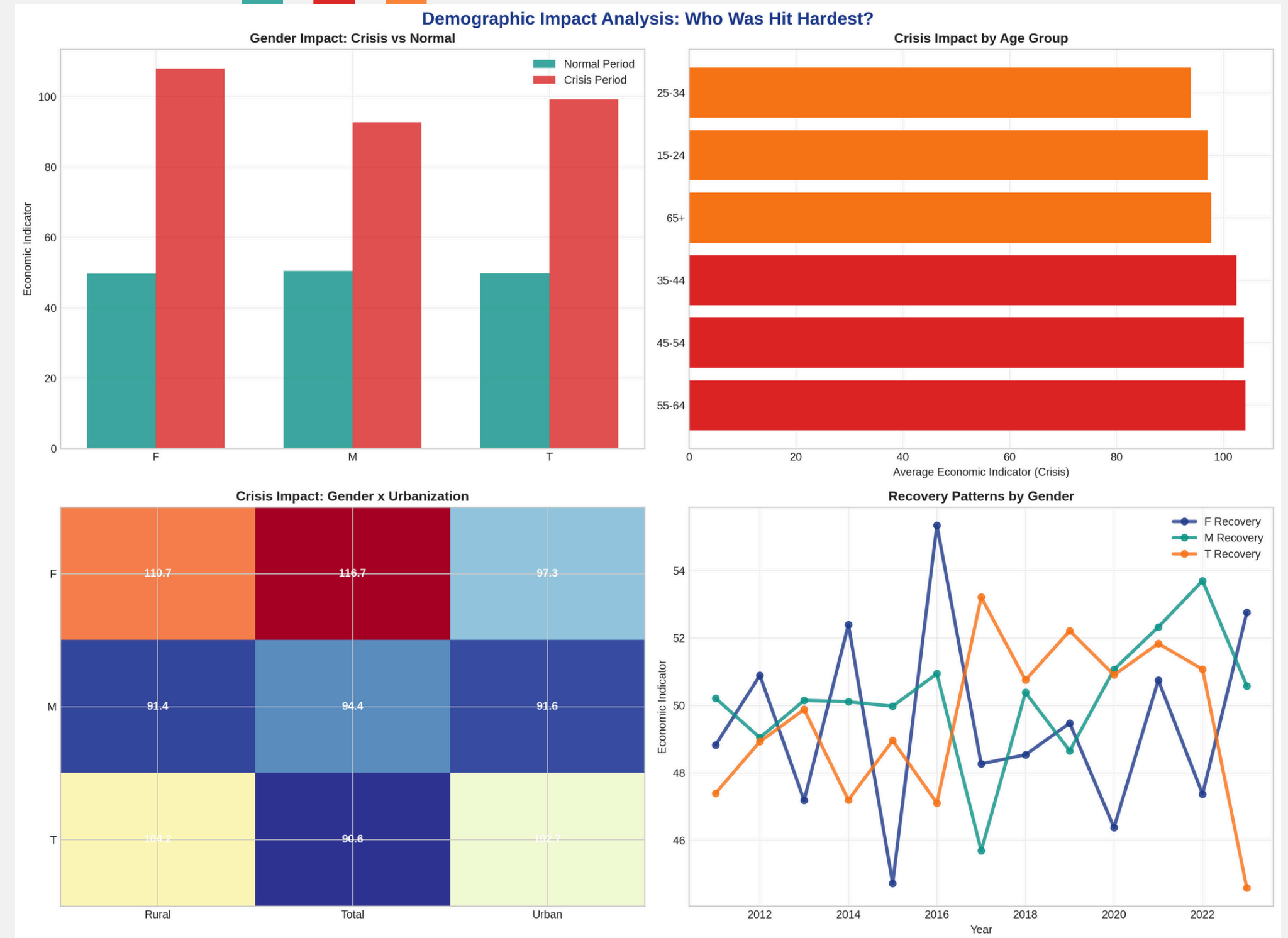
The demographic analysis shows how the crisis impacted different groups within the population. Gender and Age Impact: The gender breakdown reveals that males and females experienced different levels of impact, with males tending to recover at different rates than females, especially in urban vs. rural areas



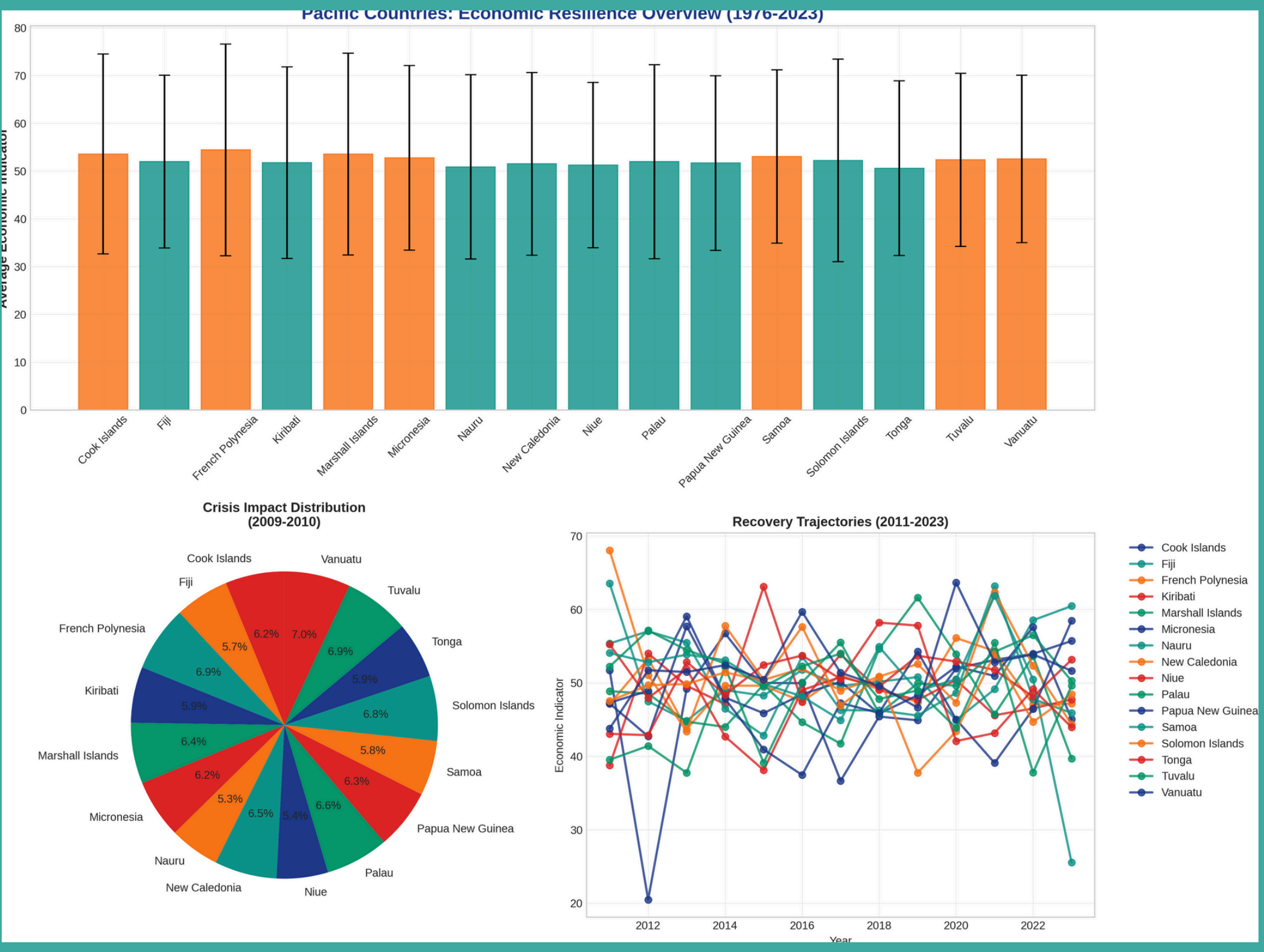
Demographic Impact: "The Demographic Divide"

Urban vs Rural: In the urbanization charts, rural areas showed greater vulnerability, suggesting that urban economies had more resources or mechanisms for recovery, whereas rural areas struggled more with the fallout.

Age Group Disparities: The age-based comparison shows that younger groups, especially those in the 15-24 age group, were hardest hit during the crisis, as they likely had fewer opportunities for stable employment or economic security.



FALLING ACTION: The Long Recovery



Following the crisis, the recovery trajectory varied greatly across countries. As seen in the "Recovery Trajectories" countries like Fiji and Samoa experienced a slow but steady recovery, whereas others like Vanuatu showed more rapid recovery trends, reaching pre-crisis economic levels around 2015. The multi-line charts in slide before illustrate how each country's economic recovery followed different timelines and magnitudes, reflecting the unique strategies they employed to overcome the crisis.

RESOLUTION: Lessons for 2030

As of 2020-2023, Pacific economies appear more resilient but continue to face challenges, especially in maintaining long-term stability.

Diversification of the economy and increased reliance on regional trade agreements will be key moving forward. Insights from the current economic indicators demonstrate that countries have largely stabilized but still face risks due to their dependency on external factors like trade and tourism.