

# FIGHTING CANCER IN NEW CALEDONIA

## Gender gap

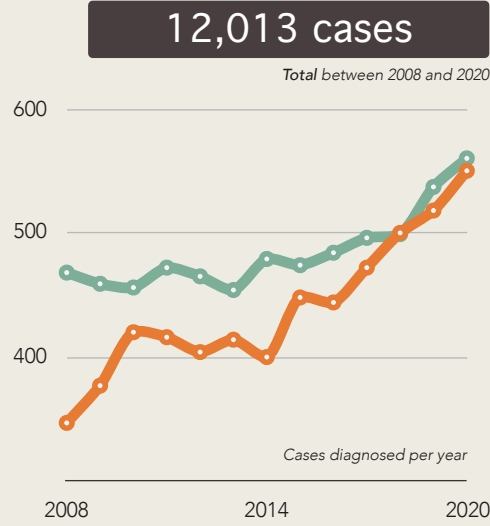
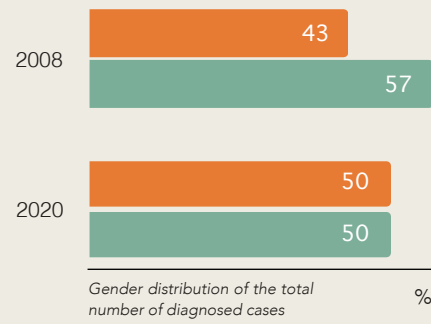
Many factors can influence cancer diagnosis and death (smoking, drinking, environment, genetics) and gender can also be one of them.

Women Men All

### Greater increase in women cases diagnosed in recent years

Between 2008 and 2020, the gender gap in the number of annual cases decreased.

In 2020, there were as many diagnosed cases in women as in men:



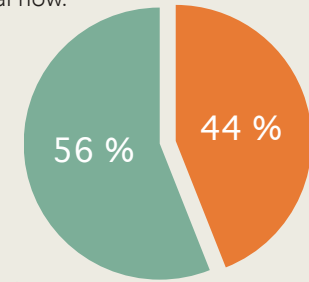
### Cancer: the first medical cause of death

5,734 deaths

Total between 2011 and 2023

Every year, more men die of cancer than women, even though the number of cases diagnosed has been almost identical now.

1<sup>st</sup>  
28% of total deaths



Deaths per year

Year	Min.	Max.
2014	164	218
2020	222	273

### Evolution of 5 most common diagnosed cancers (2008 - 2020)

1. BREAST  
32% · ↗



2. LUNG  
10% · ↗



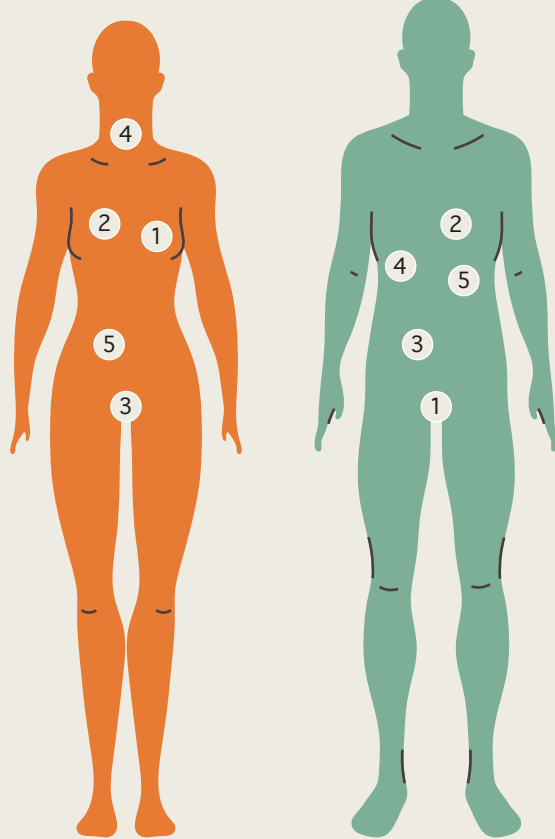
3. UTERUS  
8% · ↗



4. THYROID  
7% · ↘



5. COLON  
5% · =



1. PROSTATE  
26% · ↘



2. LUNG  
19% · ↗



3. COLON  
5% · =



4. LIVER  
4% · ↗



5. STOMACH  
4% · ↗

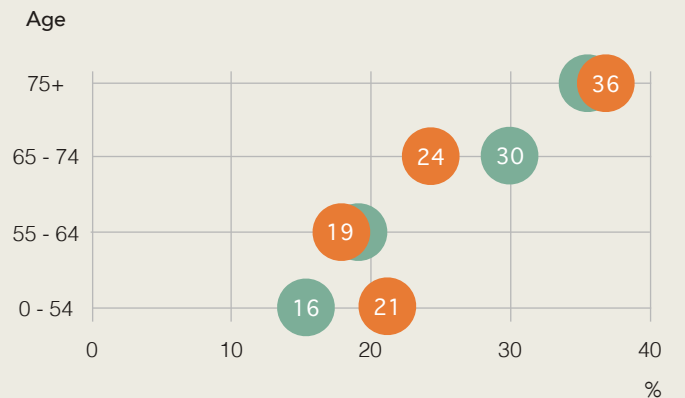


Increase ↗  
Decrease ↘  
No change =

### Proportion of deaths increase with age in men, not in women

For women, the 0-54 age group is more represented than the 55-64 age group.

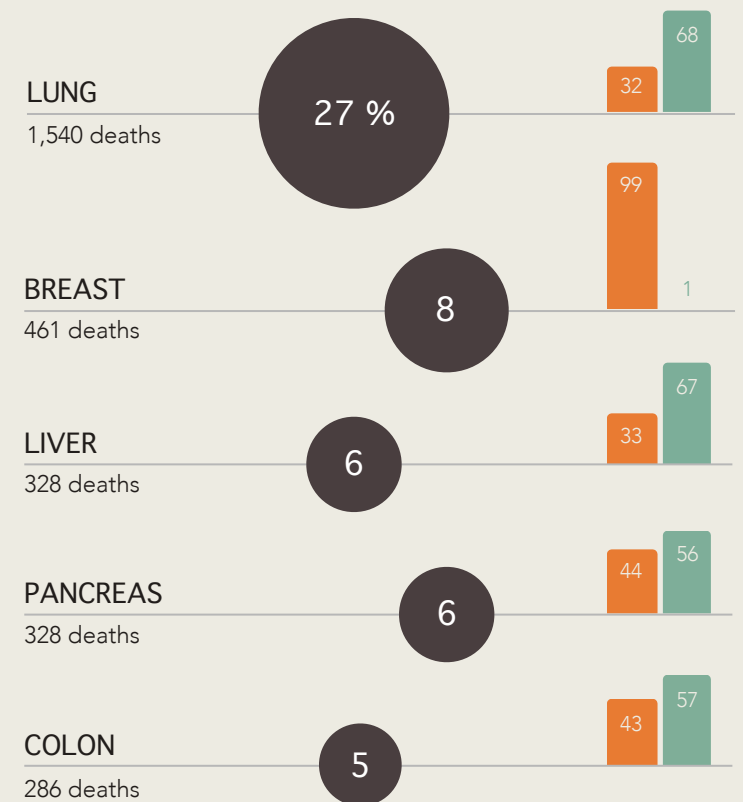
Gender and age distribution of the total deaths (%)



### The 5 most deadly cancers

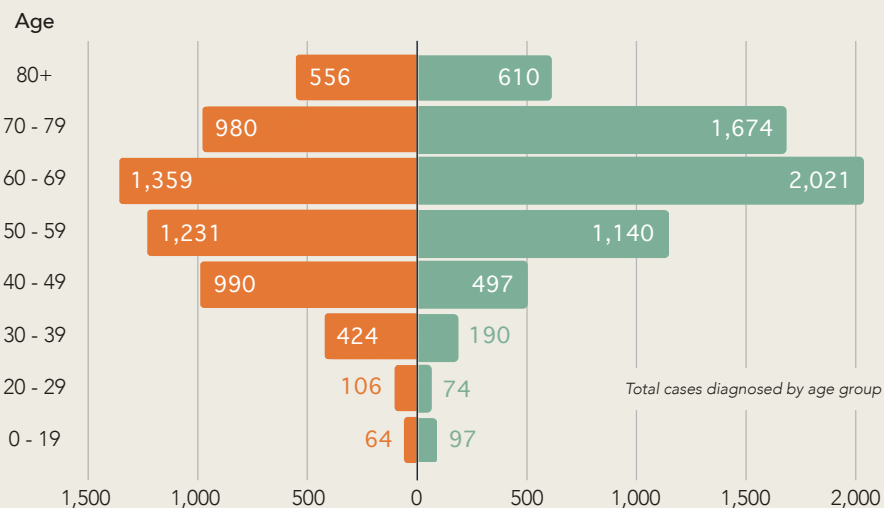
Lung cancer is by far the most deadly, ranking first in both men and women.

Proportion of total cancer death (%) and gender distribution (%)



### Women are diagnosed with cancer at a younger age than men

While the number of cases among women increases significantly from the age of 40, among men, this increase occurs from the age of 50, peaking between 60 and 69 years old.

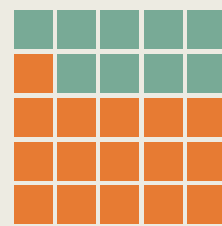


Average age of cancer diagnosis

59

64

Under 50 years, 65% are women



1 OUT OF 7



Cancers diagnosed in New Caledonia is a women's breast cancer

1 OUT OF 5



Medical deaths in New Caledonia is due to men's lung cancer