

when our waste [SUFFOCATES] THE OCEAN

Every day, thousands of tons of waste are produced by our daily activities. Much of this waste – badly sorted, poorly collected, or abandoned – ends up in nature, then in rivers... and finally in the oceans. This often invisible cycle turns our beaches into rubbish dumps and directly threatens marine fauna. Turtles, fish, and seabirds mistake plastic for food, putting their lives at risk.



People in the Pacific produce household waste per person per day.

311 000 TONS

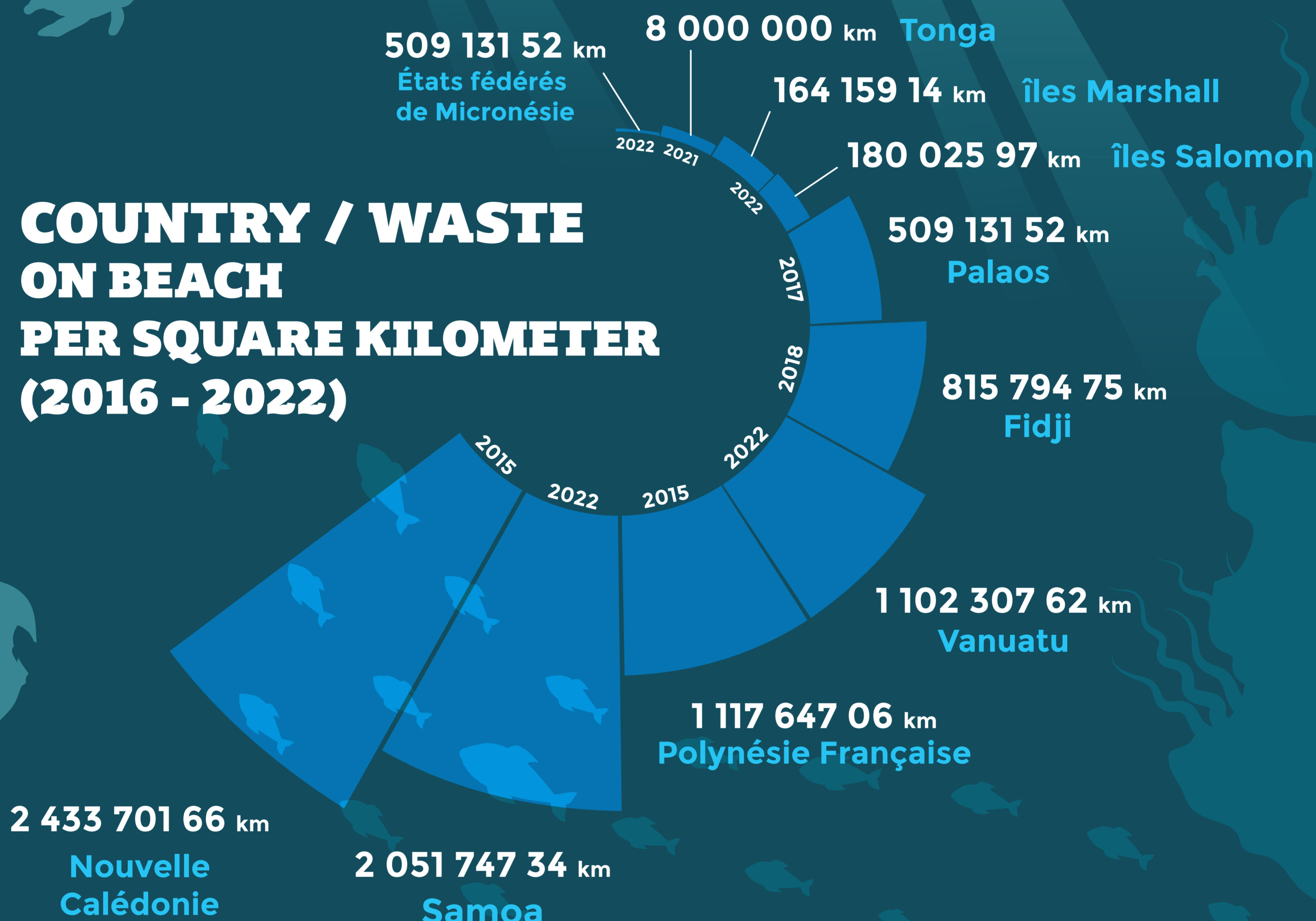
of plastic waste are generated within 50 km of the coasts of island countries.

PER CAPITA MUNICIPAL SOLID WASTE PRODUCTION 2019 (G)



73%
may spill into the sea (2025)

COUNTRY / WASTE ON BEACH PER SQUARE KILOMETER (2016 - 2022)



2022

?
33%
UNIDENTIFIED FRAGMENTS

14%
HOUSEHOLD ITEMS

13%
FISHING TACKLE

13%
FOOD AND BEVERAGE PACKAGING

PLASTICS COLLECTED IN THE GREAT PACIFIC WASTE VORTEX EN 2022