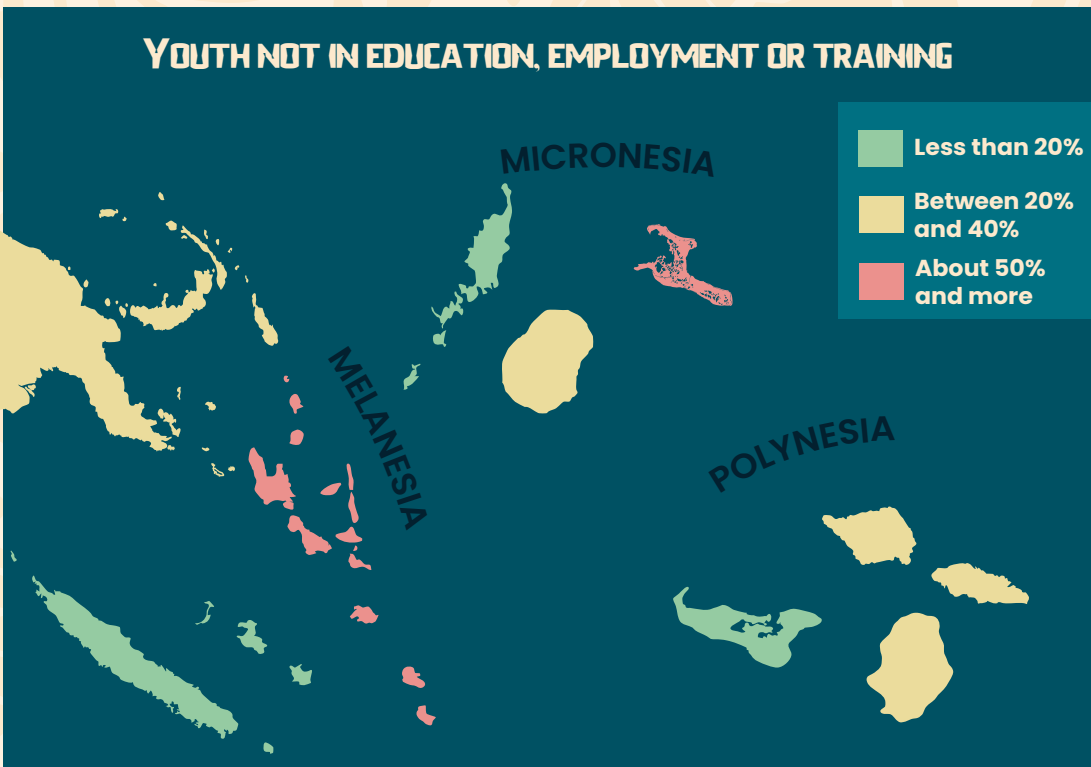


GENERATION 2050

Where are young people most at risk?

YOUTH NOT IN EDUCATION, EMPLOYMENT OR TRAINING

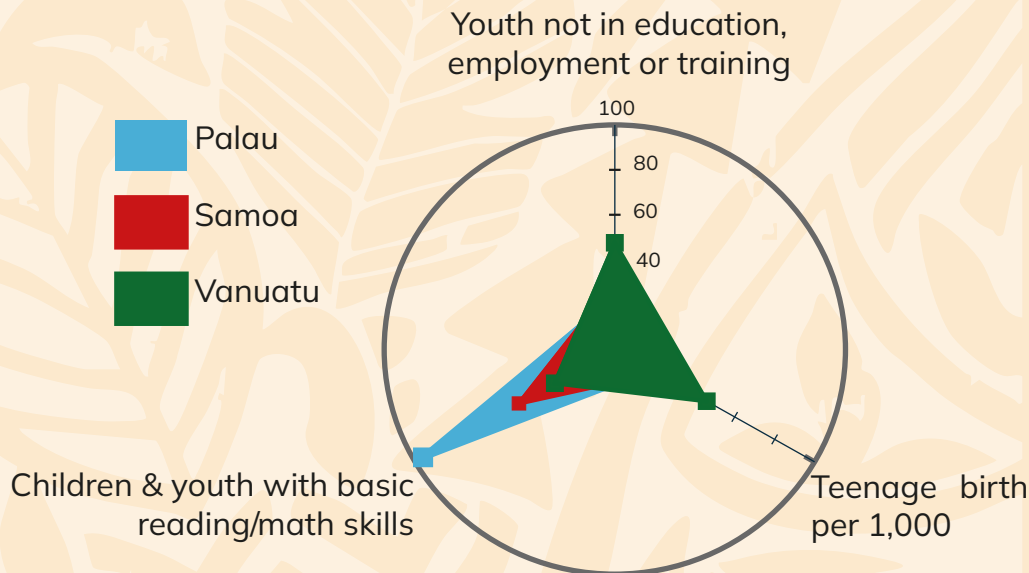


NEET rates vary widely between Pacific island countries. In New Caledonia, less than 20% of young people are in this situation; elsewhere, such as in Vanuatu or Kiribati, the rate sometimes exceeds 50%.

These figures often conceal major inequalities between the sexes, between rural and urban areas, and among young people with disabilities. The Pacific is an archipelago of hope... but also of exclusion.

Three dimensions of the future

Education, sexual health, and access to employment – these three pillars shape young people's ability to plan for the future. In the Pacific, too many youth are missing one or more of these foundations. The consequences are visible: school dropouts, early pregnancies, long-term unemployment. But behind the numbers, each island tells a different story.



Beyond the averages: A closer look at Vanuatu

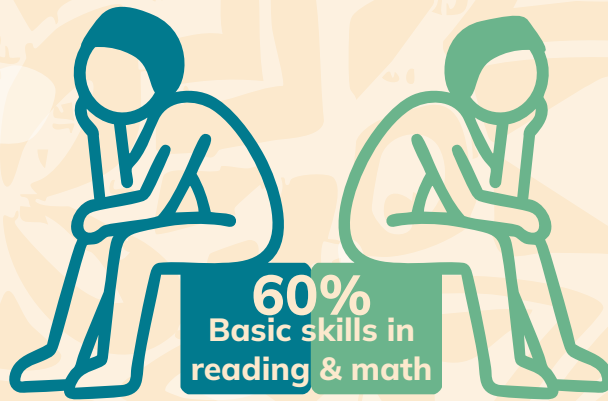
In the Pacific, the challenges facing young people vary from island to island — but in Vanuatu, they converge.

VANUATU

Vanuatu's Youth: A Generation at the Crossroads

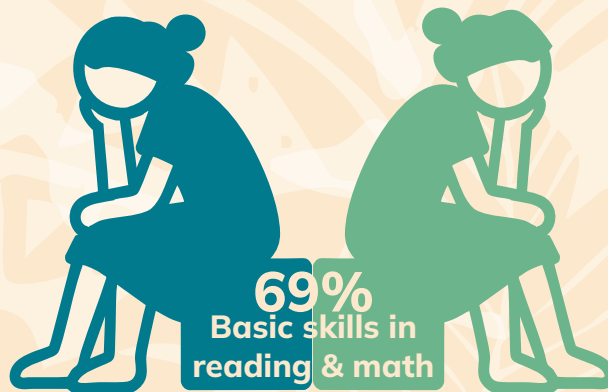
Proportion of Youth Not in Education, Employment or Training (NEET), by Sex and Location

30.7%
of urban boys
are NEET"



43.7%
of rural boys
are NEET"

31.4%
of urban girls
are NEET"



51.2%
of rural girls
are NEET"

Teen births per 1,000 girls
(aged 15–19)

